

# SCAN X

## Quick Start Guide

### GETTING STARTED WITH YOUR SCAN X

Connect your probe to the tablet and follow the **FIRST TIME SET UP STEPS**.

#### FIRST TIME SET UP STEPS:

Turn tablet on. Press blue **Probe** icon at the bottom of the screen.



You will now be in the **Probe and Exam** page. Press small **Gear** icon at top of screen.

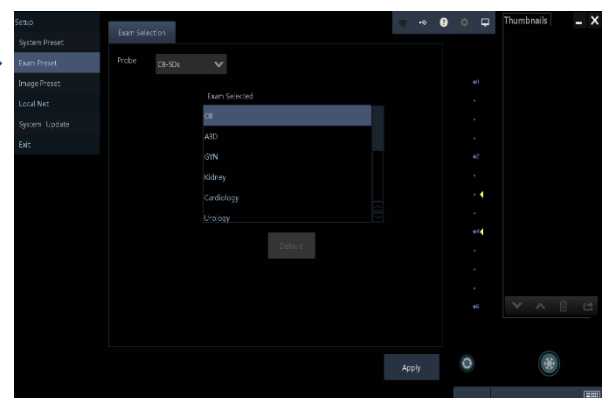
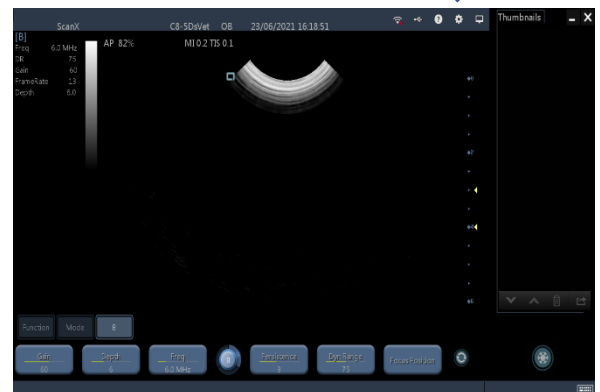


Then press **Exam Preset** in Set Up Menu.

Select probe **C8-5Ds** in the list of available probes.

In the **Exam Selected** table shown, press **OB**. Then press **DEFAULT**. This set's OB (obstetrics) as your default setting.

Press **Exit** at the bottom of the **Set-Up Menu**—Top Left of Screen.



# SCAN X

## TO START AN EXAM

1. Select **Function** and **Info** to set up a new patient.



- 2.

- a **<New Patient>**

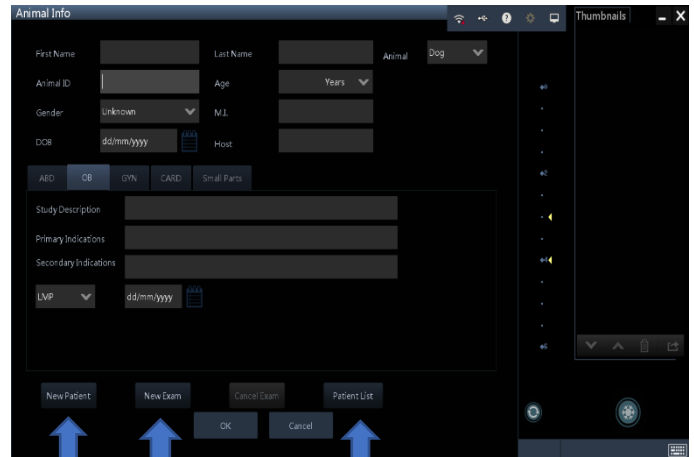
Enter patient information in the **<Patient Info>** screen & press 'OK.'

- b **<New Exam>**

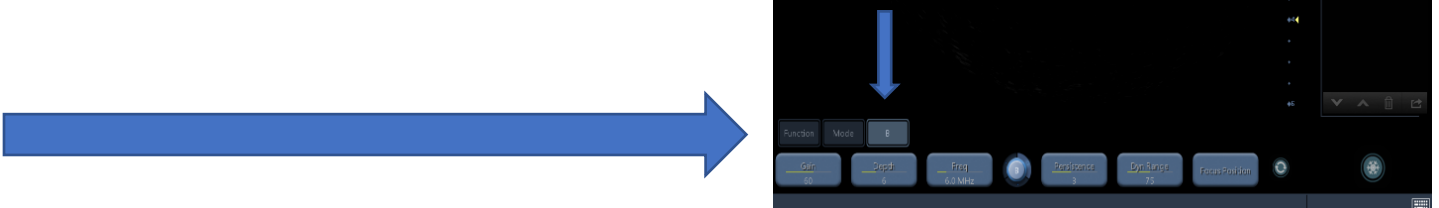
To start a new exam for a saved patient, the recorded. Information can be obtained through **<Patient List>**

- c **<Patient List>**

To start a new exam for a saved patient. Tap **<Patient Name>**.



To resume live scanning and return to main screen, press **OK** to save or **Cancel** and then Press **B**.



# STARTING YOUR SCAN

Apply ultrasound gel to your probe.

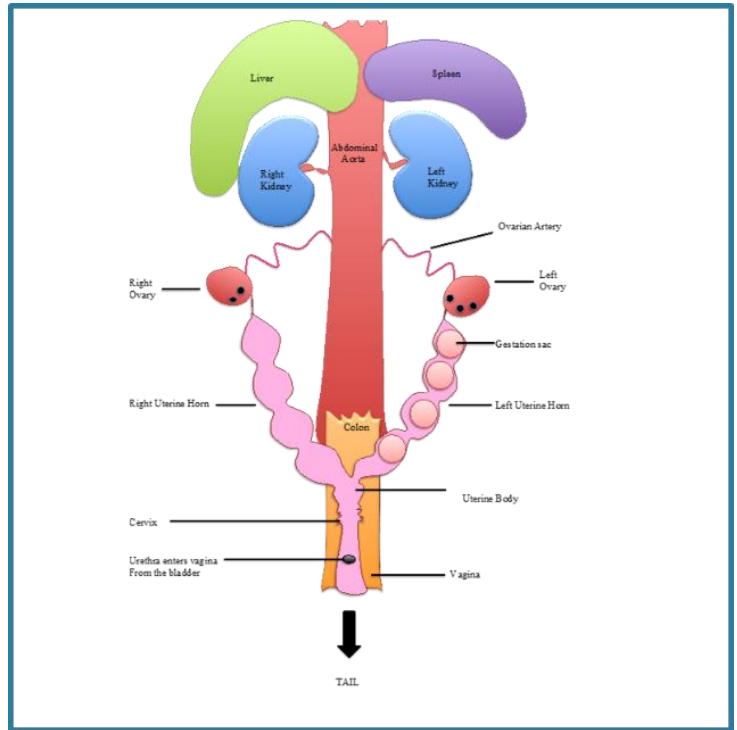
The easiest method for pregnancy detection is to scan along the midline of the bitch/queen, starting at the bladder (nearest the tail) & working up to the liver.

Adjust the image controls, so that the area of interest is in the middle of the screen (refer to manual).

Scan in the nipple line up to the liver & spleen.

Return down to the bladder dipping the probe, angling to the left, then repeat the sweep angling & dipping to the right.

Only after completing a methodical survey of the abdomen, can you be sure that you have not missed anything.



# KNOW YOUR KEY CONTROLS

GAIN	DEPTH	SAVE	FREEZE	FREQUENCY
Amplifies the returning signal. Increase Gain if your image is too dark and decrease it if your image is too bright.	Utilize as much of your scanning area as possible by reducing your depth so that your region of interest fills your screen.	Press Save to save your image in the systems memory to view later.  Press <b>Function</b> > <b>Save</b>	Freezes an image to Save.  Press <b>Snowflake</b> icon on right side of bottom screen.	Higher Frequency = Greater resolution but reduced penetration.  Lower Frequency = Reduced resolution & greater penetration.  <i>Use the highest frequency possible to reach the necessary depth to view what you aim to see.</i>



## Helpful Tips & Tricks...

- Both your new tablet and transducer likely come with protective covers. You do not *need* to remove the clear screen protector cover to use your tablet, but you must remove the protective strip from the transducer head to be able to scan.
- Ultrasound gel is an acoustic couplant, not simply a lubricant. As such, it is not advisable to substitute ultrasonic gel for any other type of gel or cream. In an emergency, the best substitute for ultrasound gel is water, as it has a similar acoustic impedance to ultrasound gel and soft tissue. It is not recommended to use alcohol as it will damage your probe head over time.
- Ultrasound waves do not pass-through air. Air blocks the ultrasound waves since hair and fur can trap air bubbles and interfere with the image. It is ideal to shave the area to ensure direct contact between the ultrasound probe and skin (and of course, gel) **unless there is little hair/fur interfering with the image**, in which case, shaving is unnecessary. The ultrasound gel eliminates air between the probe and the skin surface. Remember, air is the enemy! If you don't want to shave, do your best to wet down the hair/fur with water and gel and separate it so that the probe has good contact with the skin.
- Don't be afraid of playing with controls! It's the best way to learn and remember they will always reset back to default once you turn off your machine. Remember, you can freeze an image while scanning to stop transmitting ultrasound waves to allow you to focus on the image and adjust settings.

**Finally, try to adjust the gain, the depth and frequency to ensure you make the most of what you are seeing!**

Let us know if you have questions and send us your scans! We love to keep up with how you are doing!

[info@fps.email](mailto:info@fps.email)

1.800.672.9182