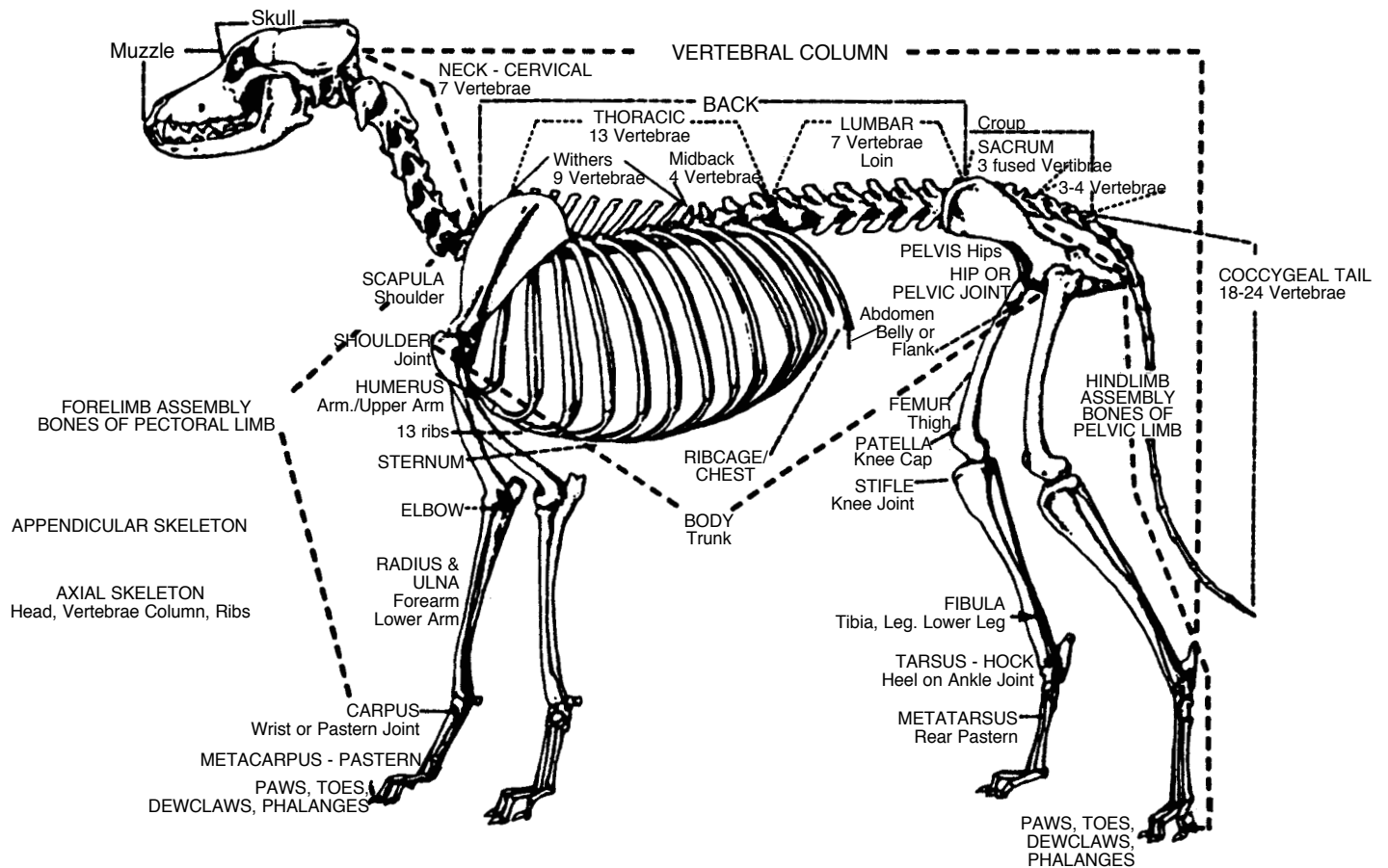


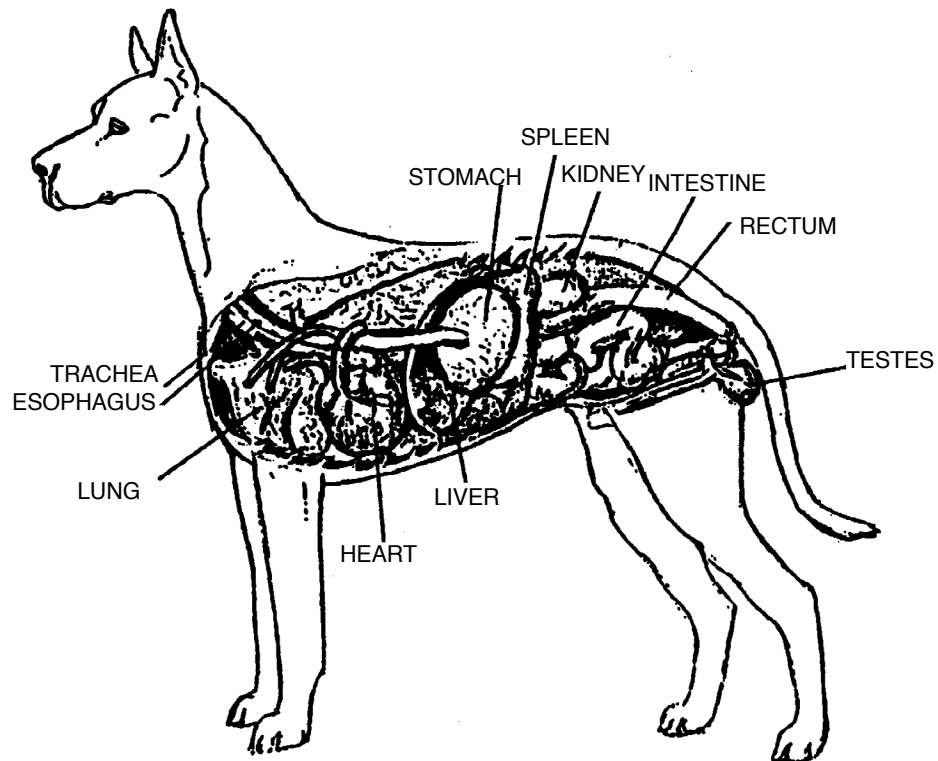
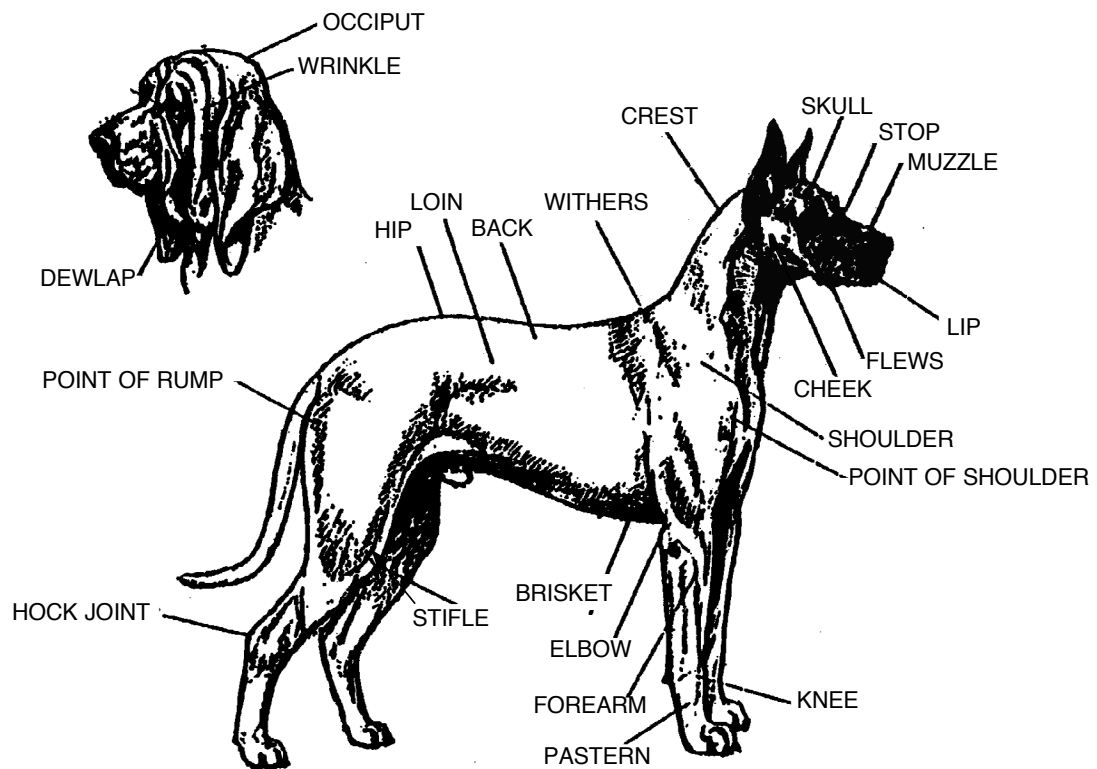


ANATOMY

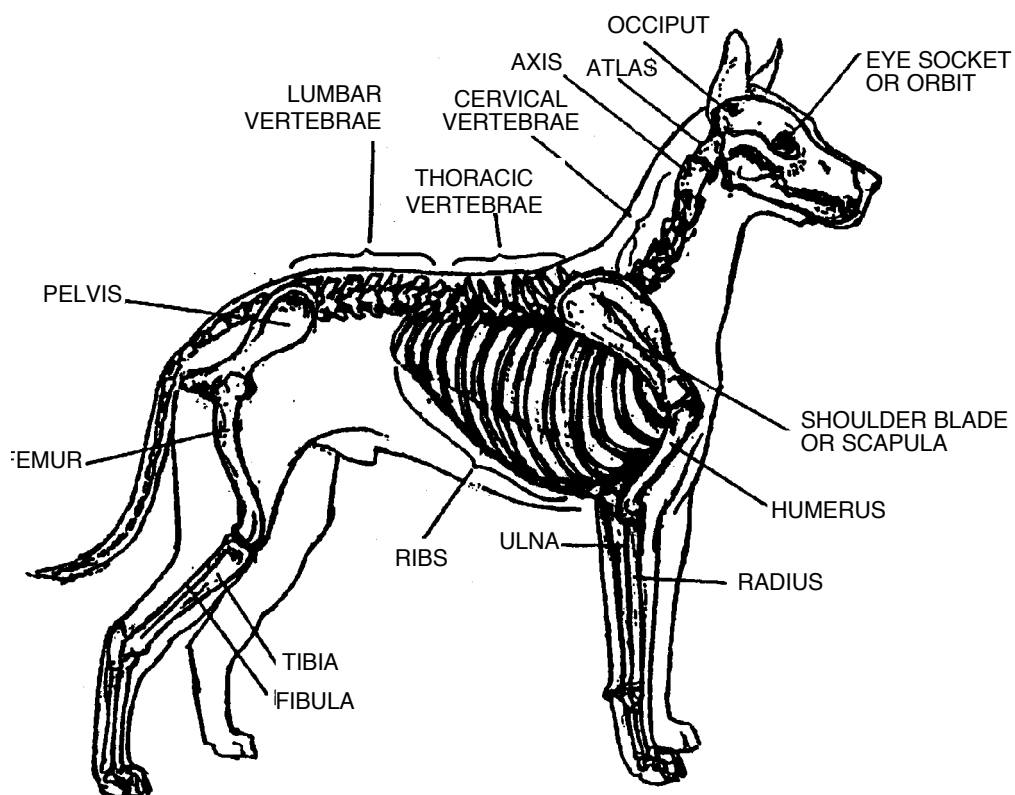
BODY



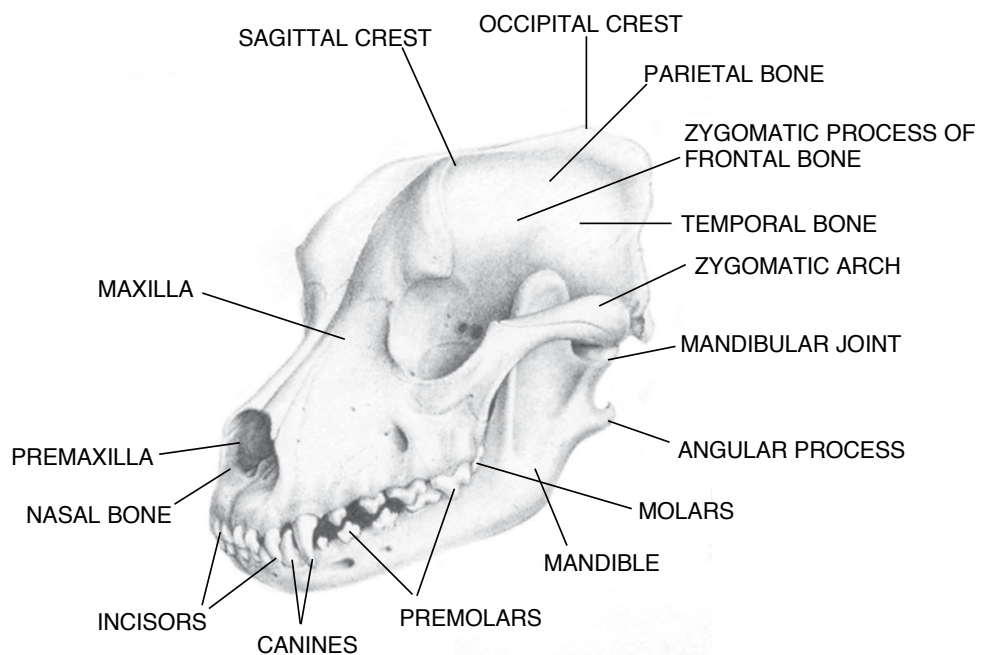
BODY



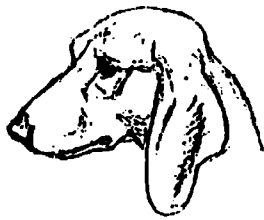
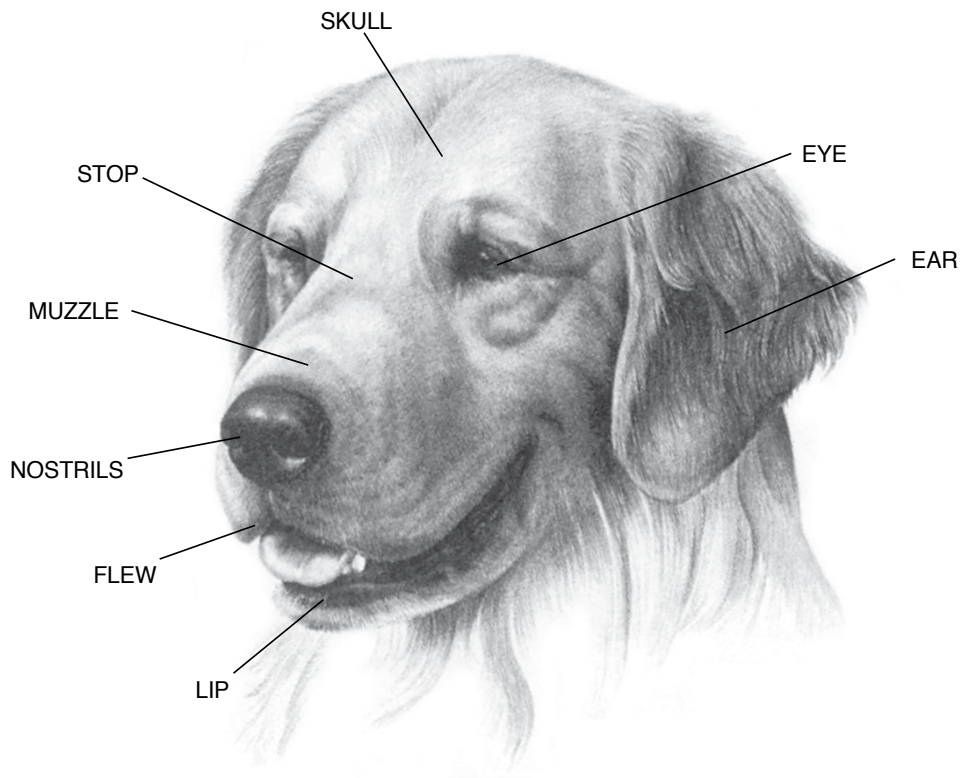
BODY



HEAD - Bones & Dentition



HEAD - External Features



DOWN FACE



DISH FACE



CHEEKY



DOMED HEAD



BUMPY SKULL



FROG FACE

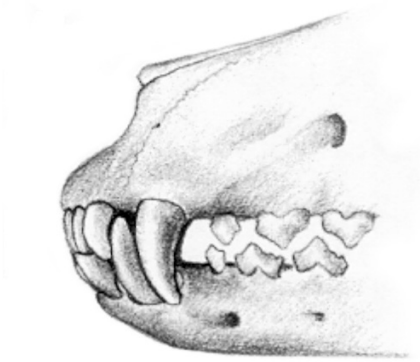


BROKEN UP FACE,
LAY BACK

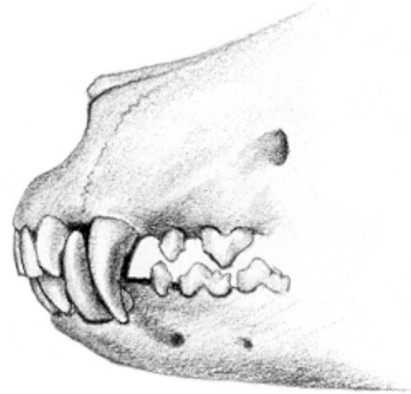


SNIPEY MUZZLE

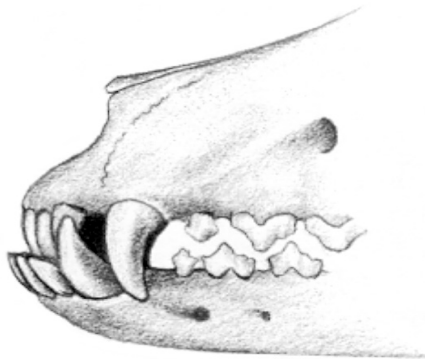
MOUTH - Bites



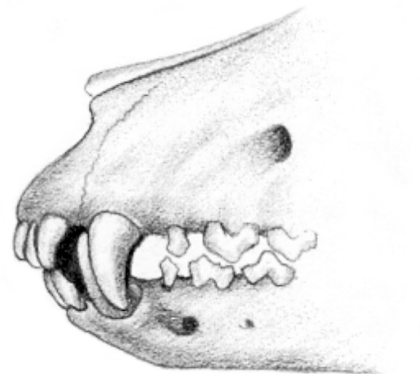
LEVEL



SCISSORS



UNDERSHOT



OVERSHOT

EYES - Types



ALMOND



OVAL



FULL, ROUND, GLOBULAR



TRIANGULAR

EARS – Types



PRICK EAR



BUTTON EAR



SEMI-PRICK EAR



DROP EAR

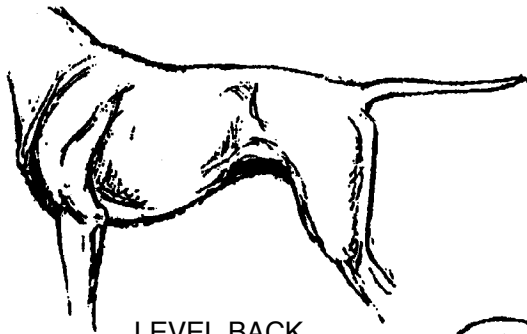


ROSE EAR

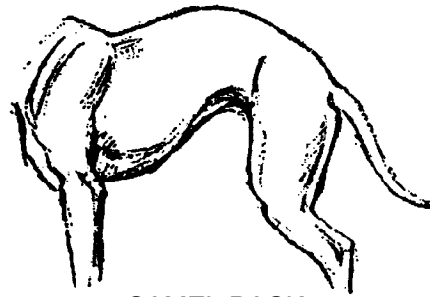


BAT EAR

BACK & SHOULDERS



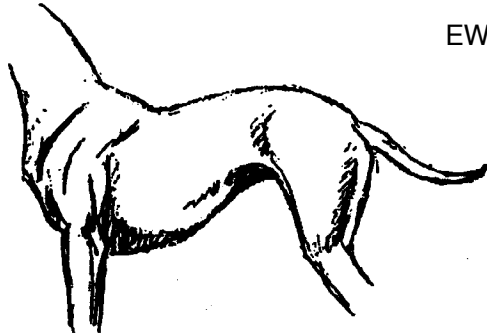
LEVEL BACK



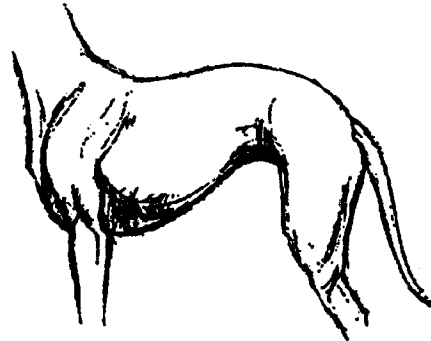
CAMEL BACK



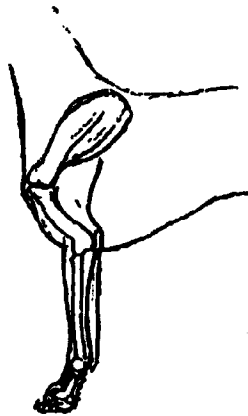
EWE NECK



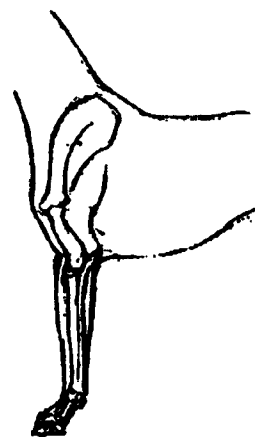
HOLLOW BACK



ROACH BACK



SLOPING SHOULDER



STRAIGHT SHOULDER

FEET – Types



ROUND OR CAT FOOT



HARE FOOT

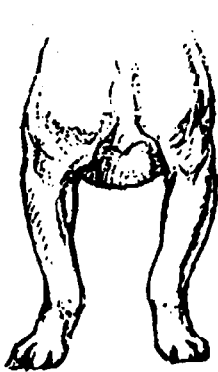


FLAT FOOT OR
DOWN IN PASTERN

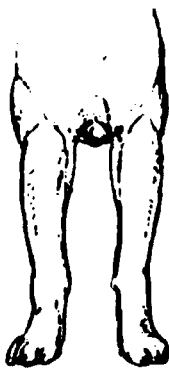


SPLAY FOOT

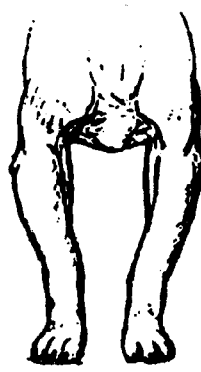
LEGS



FIDDLE
FRONT



NARROW
FRONT



OUT AT
ELBOW



STRAIGHT
FRONT



DOWN
IN PASTER



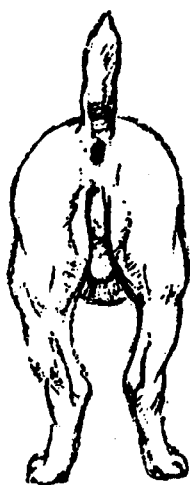
NUCKLED
OVER



"WOLF"
SHOULDER



STRAIGHT
FRONT



COW-HOCKED



CORRECT
HIND END



STRAIGHT
STIFLED



MODERATELY
ANGULATED
HINDQUARTER

FRONTS



NORMAL, STRAIGHT



TOO NARROW IN FRONT
AND EAST-WEST FEET



CHIPPENDALE OR
FIDDLE FRONT



OUT AT ELBOW AND
TOO WIDE IN FRONT



STRAIGHT FRONT



KNUCKLED OVER



DOWN IN PASTEREN

REARS



CORRECT, STRAIGHT, NORMAL



COW-HOCKED



BANDY OR WIDE



NARROW



NORMAL ANGULATED
HINDQUARTERS



STRAIGHT STIFLES

TAILS - Types



PLUME



OTTER



CURLED



GAY



DOUBLE CURL



SCREW



SNAP



WHIP



SICKLE



RING AT END