



# Kennel and Bench



## Life Insurance for Registered Dogs

The insurance of dogs is a practical common-sense way of avoiding financial loss when the animal dies or is suddenly killed by accident.

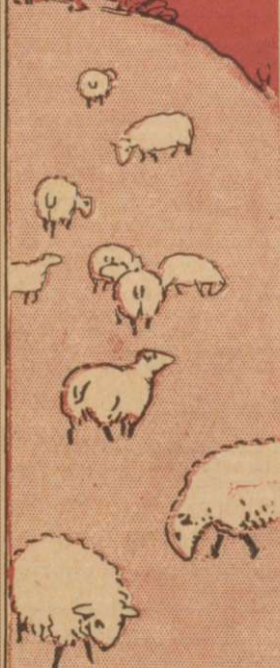
The premium paid for the insurance protection is not money spent but money invested in a sense of security.

For information apply to

**Hartford Live Stock  
Insurance Co.**

**24 Wellington Street East  
TORONTO, ONTARIO**

**R. Scott Wilson, Oakville, Special Representative**



OFFICE OF  
**KENNEL and BENCH**  
(OFFICIAL ORGAN OF THE CANADIAN KENNEL CLUB, INC.)  
774 YONGE STREET, TORONTO  
JUNE, 1923



# CANADIAN HEADQUARTERS for SPRATT'S

We carry the largest and most complete stock in Canada of Spratt's Dog Remedies, Foods and Accessories

## SPRATT'S FOOD FOR DOGS

"THE BACKBONE OF THE CANINE RACE"

The dog's constitution needs food to build it. The dog's body—too often malnourished—though it may be—can only stay in a healthy condition if the physical requirements are met. But a dog's more often malnourished constitution is a fact of life. For the majority of Spratt's customers are dogs and their owners require most of the best food for their dogs. Spratt's Food is guaranteed to meet the exact requirements of every dog, old or young, healthy or sick. Therefore Spratt's Food is guaranteed to meet the exact requirements of every dog, old or young, healthy or sick. Therefore Spratt's Food is guaranteed to meet the exact requirements of every dog, old or young, healthy or sick.

SHOW WHERE IT STANDS DESCRIBES SPRATT'S FOODS AND REMEDIES REGULARLY STOCKED (Prices Subject to Market Changes)

### Spratt's Food for Pups.

**Meat-Fibrine Puppy Food**—A complete and perfect food for puppies from weaning time on, and the only one. It is a regular food for puppies. **Large Dog** 1 lb. 1.00 per 100 lbs. **Small Dog** 1 lb. 1.00 per 100 lbs. **Medium Dog** 1 lb. 1.00 per 100 lbs. **Small Dog** 1 lb. 1.00 per 100 lbs.

**Puppy Food**—A complete and perfect food for puppies from weaning time on, and the only one. It is a regular food for puppies. **Large Dog** 1 lb. 1.00 per 100 lbs. **Small Dog** 1 lb. 1.00 per 100 lbs. **Medium Dog** 1 lb. 1.00 per 100 lbs. **Small Dog** 1 lb. 1.00 per 100 lbs.

**Meat-Fibrine Puppy Food**—A complete and perfect food for puppies from weaning time on, and the only one. It is a regular food for puppies. **Large Dog** 1 lb. 1.00 per 100 lbs. **Small Dog** 1 lb. 1.00 per 100 lbs. **Medium Dog** 1 lb. 1.00 per 100 lbs. **Small Dog** 1 lb. 1.00 per 100 lbs.

**Meat-Fibrine Puppy Food**—A complete and perfect food for puppies from weaning time on, and the only one. It is a regular food for puppies. **Large Dog** 1 lb. 1.00 per 100 lbs. **Small Dog** 1 lb. 1.00 per 100 lbs. **Medium Dog** 1 lb. 1.00 per 100 lbs. **Small Dog** 1 lb. 1.00 per 100 lbs.

**Meat-Fibrine Puppy Food**—A complete and perfect food for puppies from weaning time on, and the only one. It is a regular food for puppies. **Large Dog** 1 lb. 1.00 per 100 lbs. **Small Dog** 1 lb. 1.00 per 100 lbs. **Medium Dog** 1 lb. 1.00 per 100 lbs. **Small Dog** 1 lb. 1.00 per 100 lbs.

**Meat-Fibrine Puppy Food**—A complete and perfect food for puppies from weaning time on, and the only one. It is a regular food for puppies. **Large Dog** 1 lb. 1.00 per 100 lbs. **Small Dog** 1 lb. 1.00 per 100 lbs. **Medium Dog** 1 lb. 1.00 per 100 lbs. **Small Dog** 1 lb. 1.00 per 100 lbs.

### Spratt's Toilet Requisites for Dogs

**No. 1 Dog Soap**—Prepare a special hygiene for the dog's condition. It is a special hygiene for the dog's condition. It is a special hygiene for the dog's condition. It is a special hygiene for the dog's condition.

**No. 2 Dog Soap**—Prepare a special hygiene for the dog's condition. It is a special hygiene for the dog's condition. It is a special hygiene for the dog's condition. It is a special hygiene for the dog's condition.

**No. 3 Dog Soap**—Prepare a special hygiene for the dog's condition. It is a special hygiene for the dog's condition. It is a special hygiene for the dog's condition. It is a special hygiene for the dog's condition.

**No. 4 Dog Soap**—Prepare a special hygiene for the dog's condition. It is a special hygiene for the dog's condition. It is a special hygiene for the dog's condition. It is a special hygiene for the dog's condition.

### Spratt's Specials for Dogs.

**Pat. Rodent**—A special hygiene for the dog's condition. It is a special hygiene for the dog's condition. It is a special hygiene for the dog's condition. It is a special hygiene for the dog's condition.

**Westmet**—A special hygiene for the dog's condition. It is a special hygiene for the dog's condition. It is a special hygiene for the dog's condition. It is a special hygiene for the dog's condition.

**Meat-Fibrine**—A special hygiene for the dog's condition. It is a special hygiene for the dog's condition. It is a special hygiene for the dog's condition. It is a special hygiene for the dog's condition.

**Meat-Fibrine**—A special hygiene for the dog's condition. It is a special hygiene for the dog's condition. It is a special hygiene for the dog's condition. It is a special hygiene for the dog's condition.

**Meat-Fibrine**—A special hygiene for the dog's condition. It is a special hygiene for the dog's condition. It is a special hygiene for the dog's condition. It is a special hygiene for the dog's condition.

We have a complete stock of Spratt's Dog Remedies, Foods and Accessories. We have a complete stock of Spratt's Dog Remedies, Foods and Accessories. We have a complete stock of Spratt's Dog Remedies, Foods and Accessories.

### Spratt's Food for Dogs.

**Meat-Fibrine Dog Food**—A complete and perfect food for dogs from weaning time on, and the only one. It is a regular food for dogs. **Large Dog** 1 lb. 1.00 per 100 lbs. **Small Dog** 1 lb. 1.00 per 100 lbs. **Medium Dog** 1 lb. 1.00 per 100 lbs. **Small Dog** 1 lb. 1.00 per 100 lbs.

**Meat-Fibrine Dog Food**—A complete and perfect food for dogs from weaning time on, and the only one. It is a regular food for dogs. **Large Dog** 1 lb. 1.00 per 100 lbs. **Small Dog** 1 lb. 1.00 per 100 lbs. **Medium Dog** 1 lb. 1.00 per 100 lbs. **Small Dog** 1 lb. 1.00 per 100 lbs.

**Meat-Fibrine Dog Food**—A complete and perfect food for dogs from weaning time on, and the only one. It is a regular food for dogs. **Large Dog** 1 lb. 1.00 per 100 lbs. **Small Dog** 1 lb. 1.00 per 100 lbs. **Medium Dog** 1 lb. 1.00 per 100 lbs. **Small Dog** 1 lb. 1.00 per 100 lbs.

**Meat-Fibrine Dog Food**—A complete and perfect food for dogs from weaning time on, and the only one. It is a regular food for dogs. **Large Dog** 1 lb. 1.00 per 100 lbs. **Small Dog** 1 lb. 1.00 per 100 lbs. **Medium Dog** 1 lb. 1.00 per 100 lbs. **Small Dog** 1 lb. 1.00 per 100 lbs.

**Meat-Fibrine Dog Food**—A complete and perfect food for dogs from weaning time on, and the only one. It is a regular food for dogs. **Large Dog** 1 lb. 1.00 per 100 lbs. **Small Dog** 1 lb. 1.00 per 100 lbs. **Medium Dog** 1 lb. 1.00 per 100 lbs. **Small Dog** 1 lb. 1.00 per 100 lbs.

**Meat-Fibrine Dog Food**—A complete and perfect food for dogs from weaning time on, and the only one. It is a regular food for dogs. **Large Dog** 1 lb. 1.00 per 100 lbs. **Small Dog** 1 lb. 1.00 per 100 lbs. **Medium Dog** 1 lb. 1.00 per 100 lbs. **Small Dog** 1 lb. 1.00 per 100 lbs.

### Spratt's Dog Remedies.

**Alternative Cooling Powders**—A special hygiene for the dog's condition. It is a special hygiene for the dog's condition. It is a special hygiene for the dog's condition. It is a special hygiene for the dog's condition.

**Alternative Cooling Powders**—A special hygiene for the dog's condition. It is a special hygiene for the dog's condition. It is a special hygiene for the dog's condition. It is a special hygiene for the dog's condition.

**Alternative Cooling Powders**—A special hygiene for the dog's condition. It is a special hygiene for the dog's condition. It is a special hygiene for the dog's condition. It is a special hygiene for the dog's condition.

**Alternative Cooling Powders**—A special hygiene for the dog's condition. It is a special hygiene for the dog's condition. It is a special hygiene for the dog's condition. It is a special hygiene for the dog's condition.

**Alternative Cooling Powders**—A special hygiene for the dog's condition. It is a special hygiene for the dog's condition. It is a special hygiene for the dog's condition. It is a special hygiene for the dog's condition.

**Alternative Cooling Powders**—A special hygiene for the dog's condition. It is a special hygiene for the dog's condition. It is a special hygiene for the dog's condition. It is a special hygiene for the dog's condition.

**Alternative Cooling Powders**—A special hygiene for the dog's condition. It is a special hygiene for the dog's condition. It is a special hygiene for the dog's condition. It is a special hygiene for the dog's condition.

**Alternative Cooling Powders**—A special hygiene for the dog's condition. It is a special hygiene for the dog's condition. It is a special hygiene for the dog's condition. It is a special hygiene for the dog's condition.

**Alternative Cooling Powders**—A special hygiene for the dog's condition. It is a special hygiene for the dog's condition. It is a special hygiene for the dog's condition. It is a special hygiene for the dog's condition.

**Alternative Cooling Powders**—A special hygiene for the dog's condition. It is a special hygiene for the dog's condition. It is a special hygiene for the dog's condition. It is a special hygiene for the dog's condition.

**Alternative Cooling Powders**—A special hygiene for the dog's condition. It is a special hygiene for the dog's condition. It is a special hygiene for the dog's condition. It is a special hygiene for the dog's condition.

**Alternative Cooling Powders**—A special hygiene for the dog's condition. It is a special hygiene for the dog's condition. It is a special hygiene for the dog's condition. It is a special hygiene for the dog's condition.

**Alternative Cooling Powders**—A special hygiene for the dog's condition. It is a special hygiene for the dog's condition. It is a special hygiene for the dog's condition. It is a special hygiene for the dog's condition.

**Alternative Cooling Powders**—A special hygiene for the dog's condition. It is a special hygiene for the dog's condition. It is a special hygiene for the dog's condition. It is a special hygiene for the dog's condition.

**Alternative Cooling Powders**—A special hygiene for the dog's condition. It is a special hygiene for the dog's condition. It is a special hygiene for the dog's condition. It is a special hygiene for the dog's condition.

IF IT'S  
SPRATT'S,  
WE HAVE IT

Phone 100-1111 for  
special price and a  
complete list of  
all our products.

IMPORTANT: We  
carry a complete stock  
of all Spratt's Dog  
Medicine and  
Accessories.

THE  
WILLIAM

RENNIE

COMPANY  
LIMITED

153 King Street East

Phone MAIN 2862

Toronto, Canada



# KENNEL AND BENCH

Official Organ of  
**THE CANADIAN KENNEL CLUB**

Vol. 111

TORONTO, JUNE, 1923

209

## KENNEL and BENCH

# The English Bulldog Club of Montreal Show











[illegible]











# Late J. J. Jackson Laid to Rest

When the late J. J. Jackson, the well-known breeder of bulldogs, died, he left behind him a large and valuable collection of bulldogs, which were the result of his long and successful career. His collection was one of the best in the world, and his dogs were highly prized by all who knew them. His collection was one of the best in the world, and his dogs were highly prized by all who knew them.

2555 Adair Street, S. E.,  
Victoria, B. C.

His collection was one of the best in the world, and his dogs were highly prized by all who knew them.

Canadian Kennel Club.

His collection was one of the best in the world, and his dogs were highly prized by all who knew them.

The late J. J. Jackson, the well-known breeder of bulldogs, died, he left behind him a large and valuable collection of bulldogs, which were the result of his long and successful career. His collection was one of the best in the world, and his dogs were highly prized by all who knew them.

His collection was one of the best in the world, and his dogs were highly prized by all who knew them. His collection was one of the best in the world, and his dogs were highly prized by all who knew them.

His collection was one of the best in the world, and his dogs were highly prized by all who knew them. His collection was one of the best in the world, and his dogs were highly prized by all who knew them.

His collection was one of the best in the world, and his dogs were highly prized by all who knew them. His collection was one of the best in the world, and his dogs were highly prized by all who knew them.

Yours sincerely,  
(Sgt. J. J. Jackson)

His collection was one of the best in the world, and his dogs were highly prized by all who knew them. His collection was one of the best in the world, and his dogs were highly prized by all who knew them.

## SPECIAL.

His collection was one of the best in the world, and his dogs were highly prized by all who knew them. His collection was one of the best in the world, and his dogs were highly prized by all who knew them.



BURNABY'S ANKER (Imp.)  
(No. 10, 11, 12, 13, 14, 15, 16, 17, 18, 19, 20, 21, 22, 23, 24, 25, 26, 27, 28, 29, 30, 31, 32, 33, 34, 35, 36, 37, 38, 39, 40, 41, 42, 43, 44, 45, 46, 47, 48, 49, 50, 51, 52, 53, 54, 55, 56, 57, 58, 59, 60, 61, 62, 63, 64, 65, 66, 67, 68, 69, 70, 71, 72, 73, 74, 75, 76, 77, 78, 79, 80, 81, 82, 83, 84, 85, 86, 87, 88, 89, 90, 91, 92, 93, 94, 95, 96, 97, 98, 99, 100)

His collection was one of the best in the world, and his dogs were highly prized by all who knew them. His collection was one of the best in the world, and his dogs were highly prized by all who knew them.



BURNABY'S ANKER (Imp.)

His collection was one of the best in the world, and his dogs were highly prized by all who knew them. His collection was one of the best in the world, and his dogs were highly prized by all who knew them.







[illegible]



# London Canine Association Show



FOX TERRIERS (Smooth Haired).  
Puppy Dogs—1, Helen Turner's Lord  
Glyde. Novice Dogs—1, M. Whit-  
sitt's Double Sands. 2, Walter Vane's  
Rox. Winner Dogs—Double Sands.  
Reserve Winners—Lord Glyde. Puppy  
Bitches—1, M. M. Whitsitt's Marnie.  
Puppy Open Bitches—1, M. M. Whits-  
itt's Diamonds. Winner Bitches—  
Diamonds. Reserve Winners—Marnie.  
Puppy.

FRENCH BUDDOGS, *Wilm Bitches*—*I. Mainwright*—*Kennels*—*Wainwright's*—*Panette*—*Open Bitches*—*A repeat*—*Winners*—*Bitches*—*Wainwright's*—*Panette*.

RUSSIAN WOLFHOUND, Open  
Dogs—1. E. M. Burke's Ostrander  
Valley Farm, 2. M. Burke's Per-  
sian Valley Farm, Winners Dogs—  
Ostrander Valley Farm, Reserve  
Winners—Persian Valley Farm  
Novice Bitches—1. E. M. Burke's  
Nick's Ravine, Winners Bitches—  
Nick's Ravine.

**COCKERSPANIELS, Puppy Dogs**  
**1, John Tomlinson's Woodland**  
**patch—1, Rexus's Skipper—1, Novic**  
**dogs—1, Skipper—1, Limit Dogs (Black)**  
**—1, John Tomlinson's Woodland (Tan**  
**and Red)—1, Max Macdonald's Rex Open**  
**Dogs (Black)—1, Rex—1, Limit Dog**  
**(Red)—1, John Tomlinson's Wood**  
**land Willard Puppy Stitches—1, Rob**  
**Tomlinson's Woodland June—1, Novic**  
**Stitches—1, Alex James's Lady Barton**  
**2, John Tomlinson's Woodland Goldie**  
**2, Bob Smith's Donnie Parti-col**  
**—1, Limit Dogs—1, Lehar Oke's Doug**  
**Box Open Dogs—1, Repeat—1, Limi**  
**Stitches (Parti-color)—1, John Tomlin**  
**son's Woodland Blue Belle—1, Limi**  
**Stitches (Solid color)—1, Lady Bl.**

lon. 2. Mrs. H. S. L. Herland's Woodland  
Blanche Sweet. Black. Open Bitches  
— 3. John Tomlinson's Woodland  
Bessie Winners Dogs (Solid Color) —  
Woodland Reddies Reserve Winners  
(Solid Color) — Woodland Willard  
Winners Bitches (Solid Color) — Wood-  
land Bessie Reserve Winners (Solid  
Color) — Baby Barton Winners Dogs  
(Parti-color) — Doggie Boy Winners  
Bitches (Parti-color) — Woodland  
Blanche.

**BEST FRIENDS, Open Dogs—**  
**At Foster's "Manly" Kim.**

**BEEBEE DOGS**—Juvenile Dogs—1, **W. H. Cooper's Pleasantly Victorious Ruppy Dogs**—Report—**Novice Dogs**—1, **J. C. S. Webster's Glorious Mike**. **Limit Dogs** (under 45 lbs.)—1, **J. C. S. Webster's St. Blaise**—2, **Victor Jackson's Hedgewood Silent King**. **Open Dogs** (under 45 lbs.)—1, **J. C. S. Webster's Hellly Challenger**. **Winners Dogs**—**Hellly Challenger**. **Reserve Winners**—**St. Blaise**. **Canadian-Bred Bitches**—1, **J. C. S. Webbers' Glorious Silent Duchess**. **Novice Bitches**—1, **J. C. S. Webster's Senior Betsy**—2, **Harold Mann's Blumurs Brackles**. **Limit Bitches** (over 40 lbs.)—1, **J. C. S. Webster's Blumurs Lassan egg**. **Limit Bitches** (under 40 lbs.)—1, **Hedgewood Molly**. **Open Bitches** (under 40 lbs.)—1, **J. C. S. Webster's Diamond Pale Face**. **Victor Jackson's Hedgewood Molly**. **Open Bitches** (over 40 lbs.)—1, **J. C. S. Webster's Blumurs Margaret**. **Winners Bitches**—**Diamond Pale Face**. **Reserve Winners**—**Blumurs Margaret**. **Open Bitches**—1, **Blumurs Margaret**.

AIRBOLE TERRIERS—Puppy  
Dogs—1. WIN and Belle's Roycroft  
Buccaneer #20 and Band's Bachelor  
Boy. Novice Dogs—1. WIN and Ann-  
ette's Happy Tip Top #2. Roycroft  
Buccaneer # Canadian-Bred Dogs—1.  
Happy Tip Top #2. Brooke's Twi-  
light Bachelor # Limit Dogs—1. Happy  
Tip Top #2. Twilight Bachelor # Open  
Dogs—1. S. I. Parkinson and Sam Bam-  
ford's Buck Now Comet #2. Twilight  
Bachelor #2. Ann and Jean's Glen-  
dale Max # WINners Dogs—Buck Now  
Comet # Reserve Winners—Happy  
Tip Top # Open Bitches—1. WIN and S. I. Parks  
Max # Princesses # WINners Bitches  
—Max # Princesses.

MADEIRA, Limit Dogs—1, Mrs.  
Bibbee's Bonnie, Open Dogs—Mrs.  
peal, Winners Dogs—Bonnie.  
YORKSHIRE TERRIERS, Novice  
Dogs—1, S. Tellme's Maggie, Winners  
Dogs—Winnie.

POMERANIANS, Puppy Dogs—1 Mrs. W. Wylie's Cairn-Hu. Blazer, 2 Mrs. Gerald's Churchill's Kearsey Punchello, Novice Dogs—1 Cairn-Hu. Blazer, 2, Mrs. G. Churchill's Tom Thumb, Canadian-bred Dogs—1 Tom Thumb, Limit Dogs—A Repeat Open Dogs (Black)—A Repeat Open Dogs (any other color)—1 Mrs. W. Wylie's Cairn-Hu. Goldshade Open (any color or weight)—1 Cairn-Hu. Goldshade, 2, Tom Thumb, Open Dogs (any color)—1, Kearsey Punchello, Winners Dogs—Cairn-Hu. Goldshade, Reserve Winners—Cairn-Hu. Blazer, Puppy Bitches—1 Mrs. G. Churchill's Kearsey Mollie Junior Bitches—1 Miss Dorothy Hair's Peggy, Canadian-bred Bitches—1 Mrs. W. Wylie's Cairn-Hu. Sunbeam, 2, Kearsey Mollie, Novice Bitches—1 Kearsey Mollie, Limit Bitches (under 3 lbs.)—A Repeat Open Bitches (any color or weight)—1 Cairn-Hu. Sunbeam, 2, Kearsey

## THAT A W F I L D O G

He began to cough, and he coughed till midnight  
And the bell-rings were closely pressed  
Then the "Old Man" pulled the bell  
cord—  
And the bullock died in the rest.















## Telephone City Kennel Club Show

JUDGE HORTON'S NOTES ON  
BRANTFORD SHOW.











# Saskatoon Kennel

## First Annual

(Under Canadian Law)

July - WEDNESDAY THURSDAY  
25th 26th

The Week of Saskatoon

Judge of all Breeds: Mr. Bob

Over \$1,200.00 Offered in Cash Prize

For further information

David Douglas, Secretary-Treasurer

Imported Boston Terrier

*At Stud - Ringside Pal*

(C.R.C.S.B. 102799 & N.R.C.S.B. 11941)

FEE—\$15.00 PREPAID

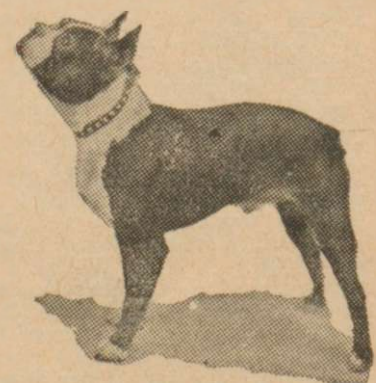
All proven sire to small, evenly marked screw tail, dark brindle, high-class puppies to the correct type. One to the best-bred Boston before the public to-day. Visiting matrons receive the best of attention.

Puppies Usually For Sale—Pekingese, Boston and Poms

For further particulars apply to

**J. B. LAWSON**

434 THIRD AVENUE N. SASKATOON, SASK. (C.R.C.S.B. 102799 & N.R.C.S.B. 11941)



RINGSIDE PAL



# Club, Registered Dog Show

(Club Rules)

Y and FRIDAY  
27th - July

on's Big Exhibition

Ross of Montreal, Quebec

izes. Valuable Specials in Galore

ion/apply to

- Box 1135, Saskatoon, Sask.

At Stud - - The Airedale Terrier  
Grand Opera

(C.K.C.B. 1981)

Fee \$20.00 Express Must Be Prepaid

R. J. HINDS

420 First Avenue South - Saskatoon, Sask.











# Int. Champion Polam Maxim

Property of Norman Mackenzie

Probably the Greatest Airedale Terrier (with emphasis on the 'Terrier') that ever lived. Stud Fee, \$35.00

Apply Bert Swann

Parkdale Kennels - Long Branch, Ontario

## BROOMHILL KENNELS, Registered - Offer at Stud

### BROOMHILL RED ROCK (Airedale)

SIRE "CH. Silver Birch Bunker" DAM "Sunset Serengeti." This consistent sire of winners is raising better stock than ever. For instance "Broomhill Kathleen," the sensational bitch that won Best in Show at Philadelphia Specialty Show, then Winners at Germantown and Bronx, and Reserve Winner at New York. His progeny are winning from coast to coast in the U.S.A. FEE \$15.

### CH. WYCOLLAR TERROR (Imp.) (Fox Terrier, Wire)

SIRE "Wycol Warrant" DAM "Ch. Wilcox of Paignon." DAM the world-famous "Queen Collar." His quality, breeding and type is undeniable. The breeding that is producing the best Wires. Weight 70 lbs.

### LATEST "BROOMHILL TERROR'S MODEL"

Winners Bitches, London FEE \$15 for a short period. Better Book now.

Correspondence invited

HAVE USUALLY FOR SALE puppies, show specimens, and Bitches bred to the above dogs and to the leading sires.

Apply Owner, MATT. GRACEY, 343 Huron Street, Toronto, Canada. Phone: Trinity 3221

## At Stud FOR YOUR BENEFIT At Stud

### The Airedales - Champion Ridgewood Rocket, Fee \$30.00

On the Bench he has topped the lot. As a sire he has no equal, having to his name upwards of One Hundred prizewinners, including breeders' Champions.

### His Son Lucknow Comet, Fee \$25.00

The near champion like his sire, he is a big winner, both on the American side and in Canada. Is a sire of numerous winners, including "Champion Boxwood Barkentine."

Further particulars apply

## SID PERKINS and SAM BAMFORD

151 Gowan Avenue, East Toronto

Telephone Gerrard 1946-J.

## If it is a Question of PRINTING

There is no job too big, nor is there any too small for

## The Industrial & Educational Publishing Co. Limited

We print this magazine and many others. Try us for your next

## PREMIUM LISTS, SHOW CATALOGUES OR OTHER DOG SHOW REQUIREMENTS

Send the copy right, and we will return the finished article perfect—saving your club money, and giving your exhibitors satisfaction.

Stud Cards that will add to the prestige of your kennel. We can guarantee satisfaction with this work.

## INDUSTRIAL & EDUCATIONAL PUBLISHING CO. LIMITED

263 Adelaide Street West - TORONTO



# AT STUD

Mr. John G. Kent's Greyhound

## Towyside Tarquin

THE ENGLISH SENSATION, whose wins include  
1st and Championship at the record  
showing Crufts, 1923

OUR DOGS of him says:

"Towyside Tarquin won and got the Champions hip, a really high-class, hard dog, describes him."

Particulars from:

BERT SWANN, Parkdale Kennels, Long Branch, Ont.

## PEKINGESE PUPPIES FOR SALE

### Two Registered Litters

First—Two Males, Four Females, whelped 8th May, 1923.

Sire: CH. Shantung of Wangza (C.K.C.S.B. 22528) Dam: Princess Kiara (C.K.C.S.B. 31923) By: CH. Prince Chai of  
Adderbourne (Imported) (C.K.C.S.B. 25382) out of a Chinatown strain bitch. All solid colors—Red, Brown, Black  
Marked and Fawn. A splendid litter this.

Second—Three Females, One Male, whelped 10th May, 1923

Sire: Peko of Ashstead (C.K.C.S.B. 27228) Dam: Ch. Linette of Wangza (C.K.C.S.B. 23285) (Nankin West  
strain) Female parti-colored, male fawn, with good black mask.

PRICED TO SELL QUICKLY—FEMALES FROM \$40.00 UP, MALES FROM \$50.00 UP.

PUPPIES READY TO SHIP first week in July. These are the very best puppies I have ever bred. Not one  
"mutt" among the litter. There are several that should go to showmen.

Correspondence invited

MRS. C. M. CASTLE, Shantung Kennels, Reg. C.K.C., GANGES, B.C.

NOTE—Ganges is 100 miles from Vancouver, Victoria, and within easy distance of Seattle and other U.S.A. Coast Towns.

## ANNOUNCEMENT:

Messrs. Treloven and Hatcher are placing AT STUD to a limited number of bitches, the newly imported  
Pekingese Dog

**BOLTONIA WENTI, Reg. C.K.C. STUD FEE \$20.00**

Winner of Silver Trophy at Manchester, Eng., Championship Show

This young dog is beautiful red with black mask, short square face with nose embedded in wrinkle, dark skull,  
nice bones and excellent body properties, sound and easy mover. His puppies in England are showing exceptional  
promise. Crown Stock and Puppies Always For Sale at Prices to Suit All Clients

For particulars apply

Mr. George Hatcher, 244 Avenue Road, Toronto

Phones: North 4060 or Hillcrest 617

When writing to Advertisers please mention  
"Kennel and Bench"







## Now for the Canadian National Exhibition



HEFTY MONARCH (Imported)  
(C.K.C.S.B. 27248) (A.K.C.S.B. 317461)

Following the last C.N.E. Dog Show, it was a wonderful entry. **Hefty Monarch** has proven his claim to be the most consistent sire of high-class stock in Canada and the United States.

At the Bulldog Breeders' Association Specialty Show, held at Toronto on Good Friday, he splendidly filled and contested classes. He got scored to 1st Firsts, 2nd Second, and 3rd Third Winners, Reserve Winners, Best of Breed in Show, Best Imported, Best Stud. He was in fact the champion daddy of the Winner and Reserve Winner.

Again at Brantford, under the noted New York Judge, Chas. H. Hopton, **Hefty Monarch's** progeny won 2nd Firsts, Best of Breed, Winners and Reserve Winners.

**Look for His Progeny at the Fall Shows  
He Will Get Them for You Too—Try Him!**

During June, July, and August he will only be allowed to meet every 10 minutes in the morning; so, it will be quite necessary to make early reservations for his services. He is too eagerly sought out and bought at high prices by American fanciers and **Hefty Monarch's** progeny will be winning over here now.

STUD FEE—\$25.00

THOMAS HICKS, 1 May Street, TORONTO, CANADA

A Going  
Concern

**FOR SALE**

A Going  
Concern

## Bert Swann's Parkdale Kennels

Long Branch, Ontario

I have, after 12 years' successful business, decided to retire from the running of a Public Boarding Kennel, the disposal of which presents to the Dog-loving Fraternity such an opportunity never before equalled in Canada.

The close proximity to Toronto assures a solid income from transient boarders alone, which, while a year-round item, is nothing short of extraordinary during the Holiday Seasons.

The property is situated about 150 feet from the Hamilton Highway and only 20 minutes from Toronto centres. It includes two 50-ft. lots by 135 ft. on which is a new 6-roomed bungalow, smart and homelike with lots of light. Front and back verandahs, conveniences.

The buildings comprise: Main Kennel, 65 ft. by 11 ft., in which are kennelman's bedroom, 15 double compartments and inside exercising room, 4-stall stable. Drive shed or garage for two cars. Crate shed, 13 ft. by 12 ft. Cook house, 10 ft. by 9 ft. Hen house, 10 ft. by 9 ft. with modern scratch shed, 14 ft. by 12 ft. Hen run, 80 ft. by 12 ft. Outside exercising ring, 62 ft. by 28 ft. There are some fruit trees. The whole surrounded by a 6 ft. close board fence.



## BYTOWN KENNELS

210 Lisgar Street - Ottawa, Ontario, Canada

### AT STUD

#### SELECTED OF PAIGNTON, Imp.

The most successful sire in America.

Double Wireboy Cross with the line of Champion Belle in the pedigree. High quality - one of the best in the Stud Fee, \$35.00.

### AT STUD

#### TRUMPS OF PAIGNTON, Imp.

In different importation from the line of the winning cross of the selected English and American sires with the Wireboy and the high quality produced in the series of the champion in the Stud Fee, \$25.00.

### AT STUD—The Smooth Fox Terrier

#### WALNUT DISTINCT

The dog has the pure blood of the Fox Terrier in the line of the champion in the Stud Fee, \$20.00.

### PEDIGREE OF SELECTED OF PAIGNTON (IMP.)

CH. Dagworth Wireboy  
CH. Wireboy of Paignton  
Nigger  
Mooly of Park  
Elyan Reese  
Moor of Victor  
Hessie of Park  
CH. Wireboy of Paignton  
Nigger of Victor  
CH. Wireboy of Paignton  
Nigger of Victor  
CH. Wireboy of Paignton  
Nigger of Victor

### PEDIGREE OF TRUMPS OF PAIGNTON (IMP.)

CH. Wireboy of Paignton  
Nigger of Victor  
CH. Wireboy of Paignton  
Nigger of Victor  
CH. Wireboy of Paignton  
Nigger of Victor  
CH. Wireboy of Paignton  
Nigger of Victor  
CH. Wireboy of Paignton  
Nigger of Victor  
CH. Wireboy of Paignton  
Nigger of Victor

### PEDIGREE OF WALNUT DISTINCT

CH. Duke  
CH. Duke  
CH. Duke  
CH. Duke  
CH. Duke  
CH. Duke  
CH. Duke  
CH. Duke  
CH. Duke  
CH. Duke  
CH. Duke  
CH. Duke



PADDY'S BUSTER

## TOWN TALK KENNELS

H. M. JACKSON, Prop.

### OFFER AT STUD

#### Paddy's Buster

(C. E. C. S. B. 235642)

Judging from the picture here produced, fanciers will see that this good son of my late Champion Jackson's Paddy Dec. is a most typical Boston Terrier and replete in the characteristics of the breed. He is a proven sire of high-quality stock. FEE—\$10.00

#### Jackson's Teddy

(C. E. C. S. B. 22291)

"Jackson's Teddy" is one of the shortest and best-headed Boston Terriers on the continent of America. He, too, is a proven sire of splendid puppies. FEE—\$10.00

#### Jackie Coogan

Color, dark seal brindle weight, just under 15 lbs. A home-bred, double-cross-bred son of my Champion Jackson's Paddy Dec., who was by the noted Ch. "Dallen's Spider, Jr." At the Specialty Show held on New Year's Day, 1923, Mrs. M. C. McGlone, the eminent American authority, found in "Jackie Coogan" her best specimen under 15 lbs. He has skull, eye, body, legs, feet, tail—in short, he has everything. STUD FEE—\$10.00

Puppies and Matured Stock Usually For Sale.

Address all correspondence and ship your money to—Satisfaction guaranteed with every transaction.

H. M. JACKSON

61 HAVELOCK STREET Phone: Kenwood 6561 TORONTO, CANADA



# Little Mickey Ringmaster

(C.K.C.S.B. 22114)

STUD FEE: \$15.00 STUD FEE: \$15.00

FACTS WORTH WHILE REMEMBERING BY THOSE WHO OWN GOOD BROOD MATRONS

Mickey is Grandson of Ch. "Tony Kingmaster" and of Ch. "Evergreen Evelyn II."

He is a rich dark brindle with perfect markings, grand body, limbs and feet, screw tail. His head is in good proportion, his picture tells the whole story. His pupils are small and his teeth correctly set, with even "gap" and level wire. For confirmation of his statement refer to the column appearing in this issue. He does get the quality stock.

"Little Mickey" was a big winner at London, Brantford, Oakville, Toronto, Boston Terrier Club Canadian National Exhibition, and at Hamilton, winning a live cup for Best quality Bred dog, June 18th 1921.

He was shown at Hamilton, 1922, when he stood on the ring with a well-bred Boston.

Mickey is mated to four services a month and service is guaranteed.

H. O'NEIL, 14 Market Square, HAMILTON, ONT.  
Phone: R. 41 Phone: R. 6811



LITTLE MICKEY RINGMASTER  
(C.K.C.S.B. 22114) Weight 12 lbs.

## ARE YOU BREEDING FOR BETTER BOSTONS?

AT STUD

### OUR KING PIN, Imp.

(C.K.C.S.B. 22277) (A.K.C.S.B. 30082)

FEE (Out-of-Town Matrons \$15.00) \$12.00

"Our King Pin" is bred to be a producer of high quality stock. He is a son of "Snappy King," who was by "Bantam King," who was by "Ch. Peters King," and is a double cross to the famous Champion "Peters King," making "Our King Pin" one of the best bred Boston Terriers now before the fancy. His picture shows his remarkable head properties.



OUR KING PIN (Imp.)

Massive Flat Skull

Short Muzzle

Just the stud force for weak-headed bitches. He will get your puppies right.

Address all correspondence and ship bitches to

W. G. LEWIS

76 Donlands Ave.

TORONTO, CANADA.

## WONDER KENNELS, Reg'd.

### Offer at Stud, Tormentor W., Imp.

(A.K.C.S.B. 354627)

(C.K.C.S.B. 33673)

Weight, 14½ lbs. Whelped March 31, 1923

This grand little dog is only a puppy yet, but a wonderful producer. Of the first twelve puppies whelped, eight were perfectly marked and four had half collars. All with wonderful heads and bodies, short tails and grand color. That goes to show he is a producer from the wonderful strain behind "Tormentor," "Patsy," "Ringmaster," "Derby Boy," "Highball," "Peter's King," "Stroller," "Double cross to Ch. Dallen's Spider," "Tre-mont," "Auburn," "Revello," and many others. Can you beat that? And now show dog he won one novice under 15 lbs. and Best Dog under 15 lbs. owned by him at the Boston Terrier Club of Toronto, on Good Friday, March 30th. He is a wonder. Breed to him and your luck will change. You are sure of good ones.

STUD SERVICE, \$10.00 FOR PRESENT

The new dog arrived. He is a dandy—just the dog you are looking for.

### Peter Piper (A.K.C.S.B. 293196)

Weight 15½ lbs.

Son of Connie Sullivan's Fitzpatrick Jew III, a grand-headed dog full of quality, good strong head, large expressive eyes, grand body and tail—a dog that has won a name in the States and is becoming a leading producer of Canada. Watch for his puppies. Write for stud card and particulars.

SERVICE GUARANTEED and breeding certificate furnished with each mating. We give visiting matrons special care and attention. Satisfaction guaranteed. PUPPIES AND GROWN STOCK FOR SALE AT ALL TIMES

Wonder Kennels, Reg.

PHONE GERRARD 2115

V. Mathewson, Prop.

535 DANFORTH AVE., TORONTO, ONT.



## IN THE HOUSE OF REPRESENTATIVES

**TORONTO, CANADA**

MRS. J. W. BRUCE, 663 Carlaw Avenue, TORONTO, CANADA







**The French Remedy Co.**  
**Victoria, B.C., Canada**

Use freely in dog kennels—  
substantially against fleas!!!  
**PRICE AND VERMIN**

**DOG MIXTURE COMPANY**  
2 Bartholomew Close  
London, E.C.1

CHEMICAL ABSTRACTS CO., INC.  
505 Market St., New York 36, N.Y.

Send for the copies of Redigant Form for Dogi

123 Bay Street  
TORONTO

**BEKE MARR THE PRINTER**  
**11 Boston Ave. Toronto, Canada**  
 Telephone CErnran 1594

[illegible]

In Ball Premium Lists, Catalogues,  
Ribbons, Pedigrees and Stud Cards  
Armstrong Printing Co.  
62 Front St. East Toronto, Ont.









# 18th Annual Dog Show

(Under Canadian Kennel Club Rules)

By the

**Alberta Kennel Club, Calgary, Alta**

**Judge: Bert Swann, Esq., Toronto**

Entry fees: \$1.50 first entry; 50c. for each subsequent entry of the same dog.

Full classification. Many beautiful and useful trophies and specials.

Come West, young men, and participate in the biggest and best Stampede and Buffalo Barbecue on record.

ENTRIES CLOSE JULY 1st.

**J. M. MILLER, Secretary - City Hall, Calgary, Alta.**

## FOR SALE

**Russian Wolfhound Pups**  
Sire: "Nicholas" of "Roscoe" (C.K.C.S.B. 01128)  
Dam: "Nadine" of "Tel" (C.K.C.S.B. 024156)  
FEMALES, \$25.00; MALES, \$35.00  
**J. F. TAYLOR**  
Stop 39, Birchcliff, Ont.

## FOR SALE

Two Pekingese Brood Bitches, 18 months old, fine white with red markings. Also Black German Dog Pup, 9 months old. All eligible for registration. Any suitable dogs accepted.

**RICHMOND HILL KENNELS**  
FIRST FLOOR, Richmond Hill, Ontario

## FOR SALE

### French Poodles

These Poodles are eligible for registration in the Canadian Kennel Club. Apply—

**MRS. S. CAMMON**  
112 Napier Street, Hamilton, Ont.

## The Dog Fancier

Monthly Kennel Publication

Established 1881.

The oldest, most popular and most prosperous kennel publication in America. Contains each month a special reading matter of illustrations of value to every owner of a dog.

Advertisements get excellent results, and the rate is very low. Covers the entire United States and Canada, and the dog world of your country is reached through the Dog Fancier.

A sample copy will be given for 10 cents. Subscription prices in the United States, \$1.50 per year. Canadian subscription, \$1.75 per year. Foreign subscription, \$2.00 per year. Subscriptions may be sent to the office of the Canadian Kennel Club or direct to

**EUGENE GLASS, Publisher.**  
BATTLE CREEK, MICHIGAN.

Are you getting full value  
in your

## Prize Ribbons and Rosettes

Why not write us NOW  
for prices. We aim to  
give EXTRA VALUE

## THE TORONTO TROPHY - CRAFT COMPANY

1711-12 Royal Bank Bldg.  
King and Yonge Streets  
TORONTO

## FOR SALE

**Russian Wolfhound**  
Sire: "Belmont" of "Fort" (C.K.C.S.B. 2941)  
Female, White and Cream; Born April 5th, 1919.  
**N. C. LEAFORD**  
Empress St., Regina, Sask.

## PRIZE ROSETTES

Since 1900

## BADGE & SPECIALTY Co., Limited

Set of Officer Badges Free  
only with orders received  
early.

P.O. BOX 456, MONTREAL  
Tel. Main 1611

## WANTED

### Russian Wolfhounds

All Stock. State lowest price to

**JACK FASIG**

613 S. Main St., Elkhart, Ind., U.S.A.

## ENGLISH SETTERS

Beautiful little from double strain of  
"Champion Glenview Major" Sire and dam  
Set 11 weeks. It is registered. Price,  
\$25 each. For quick sale.

**RUPERT W. NEIL**

Saskatoon, Saskatchewan

## FOR SALE

Wavy-coated English Retriever  
Male Puppy, 6 months old. Price  
\$20.00. For particulars, apply to

**W. J. McLEAN**

163 Highland Avenue, St. Catharines, Ont.

## THE DOG WORLD

(ENGLAND)

### The Real Live Doggy Paper

No American fancier, breeder or  
owner should miss this budget of  
news. Special features weekly. The  
Perfect Dog and Prevalent Faults  
are dealt with by that famous dog  
artist, Mr. Hutchison.

Practical articles. Special page  
for novices, etc., etc.

SUBSCRIPTION RATES:

1 year \$2.00 postpaid  
1 year \$4.00 postpaid

Specimen Copy Free

Link House, 54-55 Fetter Lane  
LONDON, E.C.4, ENGLAND



WHEN YOU ARE ANSWERING  
ADVERTISEMENT  
PLEASE MENTION  
THE KENNEL IN BENCH







# FOOD--GOOD FOOD

## Your Dog's Strength and Vitality Depend On It

No dog can be in the pink of condition if undernourished. He may have plenty of food and still be underfed, if his food doesn't contain the elements of proper nutrition.

If you feed your dogs "De-mineralized" food—food robbed of mineral elements, they are bound to lack the energy and endurance they should have. This is one of the reasons why MILLER'S SEA-L Ration should play an important part in their regular diet.

MILLER'S SEA-L RATION is a highly nutritious food made of Wheat, Barley, Corn, Meat, Bone and Blood meal. It contains the vital mineral elements necessary to build up strength and vitality.

MILLER'S SEA-L RATION IS THOROUGHLY COOKED and ready to feed. Ask your dealer for it and insist on it. Do not accept substitutes. If he cannot supply you, send us dealer's name and we will send you free sample.

IN CANADA FROM HAMILTON, ONT.  
(DUTY PAID)

\$7.50 per 100 lbs. \$36.25 for 500 lbs.

IN UNITED STATES

\$6.00 per 100 lbs. \$27.50 for 500 lbs.

(HIGHER IN SOME PLACES)

SEND ALL ORDERS TO

BATTLE CREEK DOG FOOD CO.

Dept. M 272 BATTLE CREEK, MICH.





## Spratt's Foods

Obtainable Throughout  
the Dominion

SPRATT'S FOODS LTD. - LONDON

It is the duty of every dog owner to keep his dog in good health and in good spirits. This can be done by feeding him with Spratt's Foods. These foods are made from the best materials and are of the highest quality. They are easy to digest and are of the highest quality. They are easy to digest and are of the highest quality. They are easy to digest and are of the highest quality.

SPRATT'S FOODS LTD. - LONDON

It is the duty of every dog owner to keep his dog in good health and in good spirits. This can be done by feeding him with Spratt's Foods. These foods are made from the best materials and are of the highest quality. They are easy to digest and are of the highest quality. They are easy to digest and are of the highest quality. They are easy to digest and are of the highest quality.

SPRATT'S FOODS LTD. - LONDON

It is the duty of every dog owner to keep his dog in good health and in good spirits. This can be done by feeding him with Spratt's Foods. These foods are made from the best materials and are of the highest quality. They are easy to digest and are of the highest quality. They are easy to digest and are of the highest quality. They are easy to digest and are of the highest quality.

SPRATT'S FOODS LTD. - LONDON

It is the duty of every dog owner to keep his dog in good health and in good spirits. This can be done by feeding him with Spratt's Foods. These foods are made from the best materials and are of the highest quality. They are easy to digest and are of the highest quality. They are easy to digest and are of the highest quality. They are easy to digest and are of the highest quality.

SPRATT'S FOODS LTD. - LONDON

It is the duty of every dog owner to keep his dog in good health and in good spirits. This can be done by feeding him with Spratt's Foods. These foods are made from the best materials and are of the highest quality. They are easy to digest and are of the highest quality. They are easy to digest and are of the highest quality. They are easy to digest and are of the highest quality.

It is the duty of every dog owner to keep his dog in good health and in good spirits. This can be done by feeding him with Spratt's Foods. These foods are made from the best materials and are of the highest quality. They are easy to digest and are of the highest quality. They are easy to digest and are of the highest quality.

## WORLD'S DOG-OWNERS AGREE

That for keeping dogs in sound health, brimming over with vim and good spirits, fine coat and pearly teeth, there is nothing like a regular meal of Spratt's. Opinions may differ on minor points. Some prefer the big, sustaining Dog Cakes, others like the dainty little "Ovals," quite a number decide on a meal they can mix with water, but there is no doubt that, generally speaking, the whole dog world to-day says "Spratt's."

# SPRATT'S

## MEAT FIBRINE DOG CAKES & PUPPY BISCUITS

Obtainable from your nearest dealer. For further information, or for a list of dealers, write to Spratt's Patent Food Co., Ltd., 25, Abchurch Lane, London, E.C. 4, England.